



Fire Safety Management Policy

Author	C Bowyer / Sam Hembury	Source	Judicium Model Policy
Approved By	FARR Committee	Status	Non-Statutory
Last Review	September 2024	Next Review	September 2025

Details of Policy Updates

Date	Details
September 2024	Statement of Intent and 2.3 'fire risk assessment is completed annually' changed to 'fire risk assessment is completed biennially'

1. Statement of Intent

North Star Academy Trust's primary focus is for the safety of its students, employees and visitors, to that end the fire safety management of the Trust is based around "life safety". To achieve this, the Trust will ensure:

- Appropriate advice, competence and resources are provided to carry out the preventive and protective measures required by the Regulatory Reform Order (Fire Safety) 2005.
- A suitable and sufficient fire risk assessment is completed biennially or when significant changes occur.
- A management framework to support the Headteacher to fulfil the role of the Responsible Person is in place to ensure the above objectives are met.
- Appropriate information, instruction and training is provided to all staff and to people who may be affected by the school activities.
- The school environment is safe and promotes fire prevention at all times.

The Board of Trustees are ultimately the recognised responsible people. The Trust as the employer is held by strict liability under the Regulatory Reform (Fire Safety) Order where the premises are to any extent under their control.

In practice responsibility for fire safety is delegated to the Headteacher who manages the school and its fire safety on a day to day basis. The Headteacher has specific areas of responsibility but has delegated defined duties to support staff. Please see fire management responsibilities and the organisation chart for details.

The policy applies to all relevant school activities and is written in compliance with all current UK health and safety legislation.

The policy applies to all schools within North Star Academy Trust.

CONTENTS

1. Statement of Intent.....	1
2. Roles and Responsibilities	3
2.1 Introduction.....	3
2.2 Headteacher	3
2.3 Estates Manager	4
2.4 Lead Fire Warden	4
2.5 Caretaker	5
2.6 School Administrator / Receptionist.....	5
2.7 Teachers	5
2.8 Fire Wardens.....	6
2.9 Students.....	6
2.10 Contractors.....	6
3. Arrangements	7
3.1 Introduction.....	7
3.2 Fire Management System	7
3.3 Planning	7
3.3 Emergency Evacuation Plan	8
3.4 Hirers and Extended School Providers	8
4. Conclusion.....	9
Appendix 1 - Fire Management Organisational Chart.....	10
Appendix 2 - Emergency Evacuation Plan	11
Appendix 3 - Evacuation Drill Template	14
Appendix 4 - Fire Risk Assessmant	15
Appendix 5 - Personal Emergency Evacuation plan (PEEP).....	16
Further guidance	17

2. Roles and Responsibilities

2.1 Introduction

- 2.1.1 The Headteacher is responsible for ensuring that all control measures identified in the fire risk assessment are in place and that further improvement actions are completed so far as is reasonably practicable.
- 2.1.2 The Headteacher will assign an appropriate member of his/her team the responsibility to complete each improvement action.
- 2.1.3 The premises team complete fire management tasks. This includes maintenance and testing of fire safety systems. Some of these duties are contracted to suitably qualified engineers.
- 2.1.4 Fire wardens have been designated and are suitably trained in their fire evacuation duties. Fire drills are completed once every term. All staff receive fire safety awareness training annually.
- 2.1.5 The school communications system is able to ensure that all of those involved, or potentially involved, in an incident are informed rapidly and effectively, of relevant information. In addition, the systems make use of alternative formats as necessary, with contingency plans for when systems fail.
- 2.1.6 The following are the defined responsibilities for those working within the school who have been assigned specific duties:
 - a) Headteacher
 - b) Estates Manager
 - c) Lead Fire Warden
 - d) Caretaker
 - e) School Administrator / Receptionist
 - f) Teachers
 - g) Fire Wardens
 - h) Students
 - i) Contractors

2.2 Headteacher

- 2.2.1. The Headteacher is empowered to ensure that legislative requirements are met; and that testing, maintenance or repairs are initiated as required. Such powers are supported by the necessary, sufficient and appropriate resources, including funds.
- 2.2.2. The Headteacher is responsible for ensuring:
 - a) The school has a fire safety management policy and that such a policy is reviewed annually
 - b) That a Fire Risk Assessment is completed and reviewed biennially or when significant changes occur.
 - c) by a competent person
 - d) Staff are notified of the significant findings of the fire risk assessment
 - e) Recommended actions derived from the fire risk assessment are completed
 - f) The maintenance/testing of all firefighting systems and equipment are completed and recorded in the fire safety logbook
 - g) That the school emergency plan and evacuation procedures are regularly reviewed
 - h) The school has a major incident evacuation plan which may include agreements with local providers and additional training for staff
 - i) All students, employees, visitors and others who use the building are made aware of the fire safety precautions and the fire evacuation procedures
 - j) The provision of fire awareness training to all staff
 - k) The provision of fire warden training for designated staff
 - l) That an emergency fire drill is undertaken every term
 - m) The preparation of specific personal emergency evacuation plans (PEEPs) for staff and/or pupils with special needs and/or disability

- n) The provision of suitable fire safety systems e.g. fire alarm, automatic detection and emergency lighting
- o) The provision of suitable fire safety equipment such as fire doors, fire signs and fire fighting equipment
- p) Any fire prevention officer's recommendations and or enforcement notices are complied with
- q) In instances where contractors create hazardous conditions and refuse to eliminate them or take action to make them safe, the Headteacher will take such actions as are necessary to protect the safety of school staff, students and visitors
- r) All hirers and contracted users of the premises receive written details of the fire procedure as part of the hire arrangements.
- s) The Deputy Head / Senior Leadership Team will take on the responsibilities of the Headteacher in their absence

2.3 Estates Manager

2.3.1. The Estates Manager, under the direction of the Director of Finance and Operations, will assist the Headteacher to ensure:

- a) The policy is clearly communicated to all relevant persons
- b) Appropriate information on significant risks is given to visitors and contractors
- c) All staff are provided with adequate information, instruction and training on fire safety management
- d) Appropriate consultation arrangements are in place for staff
- e) Emergency procedures are in place
- f) Fire safety systems and equipment is inspected and tested to ensure they remain in a good working condition
- g) Arrangements are in place to inspect fire safety management of the premises
- h) All servicing and maintenance records are held on file, and the fire safety logbook is maintained up to date
- i) The activities of contractors are adequately monitored and controlled
- j) Hot work permits are in place where required
- k) Reports to the Local Governing Board on the performance of fire safety management within the school are provided when necessary

2.4 Lead Fire Warden

2.4.1. The Lead Fire Warden is responsible for:

- a) Collecting all of the area and classroom information from Teachers and Fire Wardens
- b) Controlling the assembly point
- c) Ensuring that fire and rescue service access gates are opened
- d) During a practice, noting escape times and general observations for improvement
- e) Liaising with the fire and rescue service to ensure that all relevant information is communicated effectively
- f) Providing the fire and rescue service with a detailed (laminated) plan of the building
- g) Ensuring that no one re-enters the building until deemed safe to do so by the fire and rescue service
- h) Implementing the major incident site evacuation plan if required.

2.5 Caretaker

- 2.5.1. The Caretaker is responsible for controlling work, maintaining safety systems and maintenance. A system has been developed proactively with clear lines of responsibility; a permit system; logging and audit processes and routine checking and supervision.
- 2.5.2. The maintenance system is one where there is dynamic monitoring of the fire safety systems, and the equipment is kept fully functional at all times when the building is in use.
- 2.5.3. The Caretaker, under the direction of the Estates Manager, is responsible for:
- a) The formal maintenance and regular testing of the fire alarm system
 - b) The formal maintenance and regular testing of the emergency lighting
 - c) The maintenance and inspection of the firefighting equipment
 - d) The maintenance of exit/escape routes and signage
 - e) The completion and upkeep of the school fire safety logbook
 - f) Supervision of contractors undertaking work within the premises, including hot work
 - g) Ensuring that fire compartmentation is sound and that any fire engineering solutions are suitably maintained
 - h) Reporting any hazards (which cannot be dealt with) to the Headteacher
 - i) Ensuring that access can be gained at all times to the electric and gas shut off devices
 - j) Ensuring that fire critical plant such as gas boilers are annually serviced in line with the school's planned preventative maintenance regime
 - k) Ensuring that electrical equipment is suitably maintained and that fixed electrical wiring is inspected at least every five years in line with the planned preventative maintenance regime
 - l) Ensuring that firefighter equipment is maintained and accessible, e.g. fire hydrants and dry risers.

2.6 School Administrator / Receptionist

- 2.6.1. The School Administrator / Receptionist is responsible for:
- a) Calling the fire and rescue service to ensure that they have been notified of the alarm
 - b) Ensuring that classroom registers are always available and are taken to the assembly point in the event of an evacuation
 - c) Ensuring that visitors and contractors are signed in to the building and are notified as to the evacuation procedures
 - d) Where appropriate escorting visitors and contractors from the building
 - e) Collecting information such as contact details of parents
 - f) Taking such information to the assembly point for use in a major incident/site evacuation.

2.7 Teachers

- 2.7.1. Teachers are responsible for:
- a) Acting as fire wardens when evacuating their class from the school
 - b) Ensuring that their particular classrooms are kept free of hazards which may block escape routes
 - c) Ensuring that all electrical equipment used within the classroom have been suitably maintained
 - d) Reporting any hazards (which cannot be dealt with) to the premises team via the school online compliance management system
 - e) Ensuring that new students are suitably trained in evacuation procedures
 - f) Ensuring that students who attend class with a prohibitive injury are assessed and that a personal emergency evacuation plan (PEEP) is put in place
 - g) Following school evacuation procedures including reporting to the lead fire warden with the results of the register check

- h) Controlling their class at the assembly point, ensuring that no pupil re-enters the building until the lead fire warden announces that the school is safe or leaves the school premises
- i) If required, be aware and trained in the major incident evacuation plan which may require escorting the class away from the premises to a safe site
- j) Taking part in any fire safety training provided by the school.

2.8 Fire Wardens

2.8.1. The Fire Wardens are responsible for:

- a) Ensuring that their designated areas are clear before leaving the building
- b) Closing all fire doors (not on automatic closers) before leaving their area
- c) Taking an active day to day role in fire prevention and hazard spotting
- d) Reporting fire safety issues such as missing fire extinguishers
- e) Ensuring that fire escape routes/stairs and fire exits are not blocked
- f) Reporting any hazards (which cannot be dealt with) to the premises team via the school online compliance management system
- g) Reporting to the lead fire warden at the assembly point to notify them of the occupancy status of their area
- h) Assisting the lead fire warden in securing the building and ensuring that no one re-enters the premises until it is deemed safe to do so by the fire and rescue service.

2.9 Students

2.9.1. Students, in accordance with their age and aptitude, are expected to:

- a) Exercise personal responsibility for the safety of themselves and others
- b) Observe all the safety rules of the school and in particular the instructions of staff given in an emergency
- c) Use and not wilfully misuse, neglect or interfere with equipment provided for their safety.

2.10 Contractors

2.10.1. Contractors are responsible for:

- a) Identifying and controlling any risks arising from their activities and informing the Headteacher of any risks that may affect the school staff, students and visitors
- b) Being aware of the fire safety management policy and emergency procedures and complying with these at all times
- c) Liaising with the premises team and ensuring any faults are reported

3. Arrangements

3.1 Introduction

- 3.1.1. The fire safety order specifically requires a fire risk assessment to be carried out and to be suitably reviewed. This will be reviewed annually or when there is a significant change, whichever occurs first. Significant changes include, but are not limited to:
- a) Any structural changes (alternations to the layout of the premises, erection of partitions, refurbishments, etc.) which may affect the spread of fire
 - b) Any change to the use of the premises which may affect the risk rating
 - c) Any change to work processes or work equipment which may introduce new fire hazards
 - d) A change in the number of people using the premises to ensure that escape routes can accommodate the numbers safely.
- 3.1.2. In addition, it is expected that the school will put in place a management system/policy and procedures to deal with fire safety and prevention.
- 3.1.3. The fire safety management policy sets out the objectives in respect of fire prevention and emphasises the school's commitment to fire safety.
- 3.1.4. The school aims to have proactive liaison with the local fire and rescue service including effective arrangements for notifying the fire and rescue service of changes to the occupancy, periods of abnormal occupancy, fire growth characteristics and other relevant factors.
- 3.1.5. The school will ensure that all staff and visitors are made aware of the system for activation of manual fire call points (i.e. Button or Key Operated), the location of any fire extinguishers where they are not located in a noticeable position and that door access control systems will automatically release in the event of fire

3.2 Fire Management System

- 3.2.1. There is a clear fire management system in place to ensure that the school suitably manages the fire risk. The system seeks to anticipate and proactively identify the impact of any proposed changes. The management team of the school identify any alternative protection and management measures that will be required as a result and ensure that they are implemented.
- 3.2.2. The staffing level provided is specifically appropriate to the fire safety requirements of a school. It includes sufficient trained personnel to ensure that all occupants are assisted or supported, to make their way out of the building effectively in an emergency.
- 3.2.3. The training ensures that there are sufficient numbers of staff trained in all aspects of fire prevention, fire protection and evacuation procedures and able to use the appropriate extinguishing equipment (and media), to provide full coverage of the building, with provision for contingencies, sickness or holiday absences.

3.3 Planning

- 3.3.1. The implementation of corrective actions is ongoing following each risk assessment review with priority given to the highest risks. Where budget restraints delay implementation, risk management strategies will be put in place to reduce the risk.
- 3.3.2. The planning system is proactive and takes into account a wide range of possible emergencies and incidents. These are likely to include planning for logistical issues such as the provision of shelter, communications, transport, the weather, time of day, time of the week, time of year (holidays, etc.) and traffic-related issues, as well as scenarios such as power failures or floods.

3.3 Emergency Evacuation Plan

- 3.3.3. The school will ensure a suitable emergency evacuation procedure is prepared and made available to all staff. The procedure shall:
- a) Describe the responsibilities of all staff during an emergency
 - b) Describe the fire alarm activation signal
 - c) Describe the actions staff need to take to safely evacuate the premises
 - d) Describe the responsibilities for communicating with the emergency services
 - e) Describe the location of the fire assembly points
 - f) Describe variations to the plan, including out of hours arrangements and school events
 - g) Include a copy of the means of the escape plan
- 3.3.4. The school will ensure the emergency evacuation plan is reviewed following significant changes to the building's infrastructure or following significant events such as fire.
- 3.3.5. All staff, whether temporary or permanent, will have the evacuation procedure explained to them, together with information on the location of fire alarm call points, the location of the fire alarm and the location of escape routes, exits and assembly points.
- 3.3.6. The Headteacher will ensure the preparation of specific personal emergency evacuation plans (PEEPs) for staff and/or students with special needs and/or disability.
- 3.3.7. All persons with the responsibility of ensuring the safe evacuation of staff and/or pupils with special needs and/or disabilities will be made aware of the personal emergency evacuation plans (PEEPs) in place.
- 3.3.8. The Headteacher will ensure parents are consulted during the preparation of the personal emergency evacuation plan (PEEP) for their child.
- 3.3.9. All personal emergency evacuation plans (PEEPs) will be reviewed following significant changes to the infrastructure of the building, following substantial events such as fire or changes to the user's individual needs.
- 3.3.10. The Headteacher will ensure emergency evacuation equipment is available and suitable for the user. Emergency evacuation equipment will be maintained in accordance with the manufacture's recommendations. All staff required to assist the evacuation of staff and/or pupils with special needs and/or disability are suitably trained in the use of equipment.
- 3.3.11. The school will ensure evacuation drills are completed on a termly basis and records maintained within the fire safety logbook.
- 3.3.12. Following the completion of the evacuation drill, the Lead Fire Warden will complete an evacuation drill report. The report will detail:
- a) Logs of how the evacuation drill went and any inappropriate actions or problems which were noted as a result
 - b) Fire wardens present during the drill

An evacuation drill report template can be found in Appendix 3 of this policy.

- 3.3.13. The Lead Fire Warden will carry out a debrief to all fire wardens on the significant findings, including any improvements which are to be made during an evacuation.
- 3.3.14. A copy of the emergency evacuation plan can be found in Appendix 2 of the policy.

3.4 Hirers and Extended School Providers

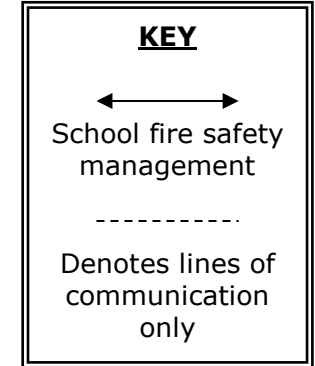
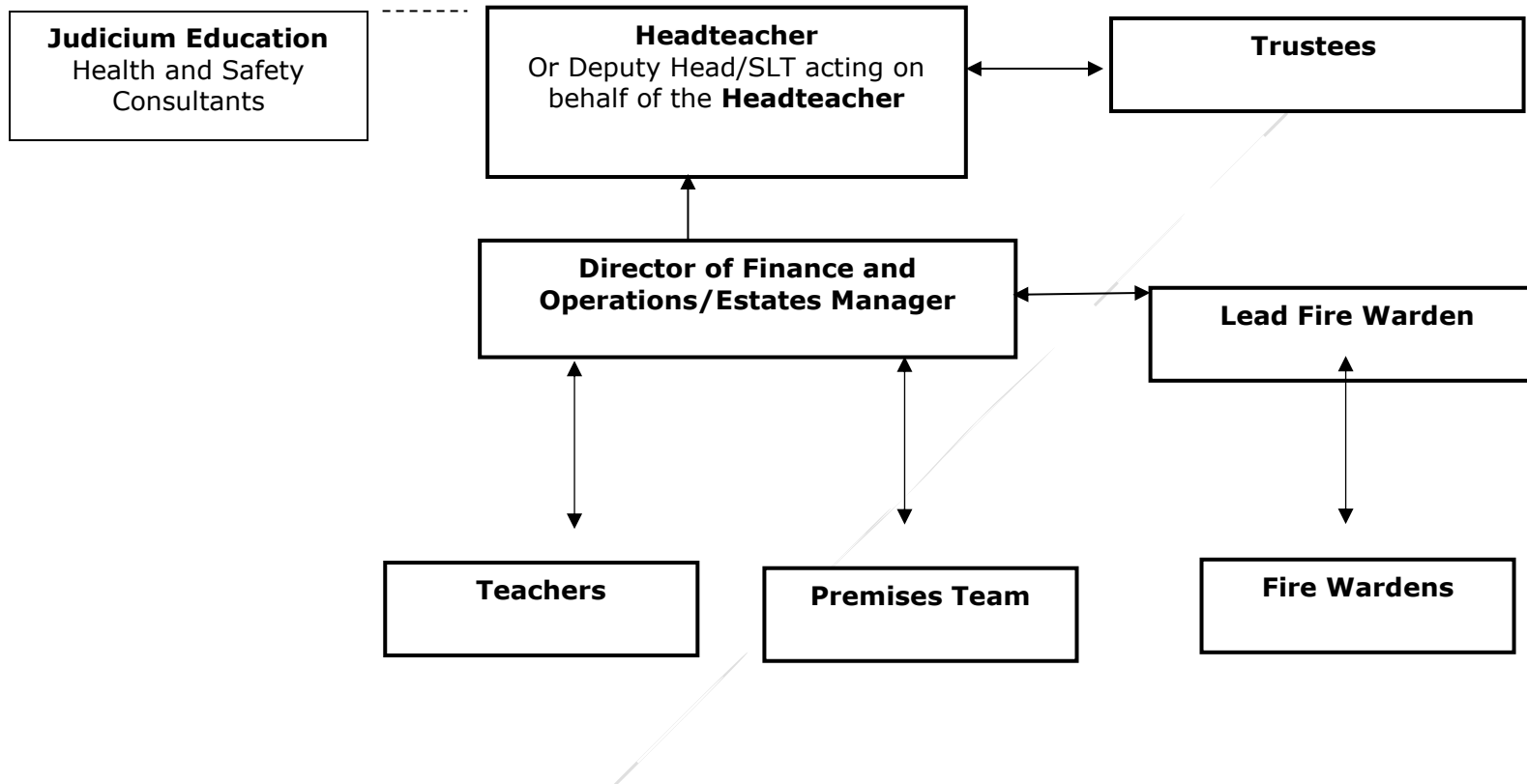
- 3.4.1 All hirers and contracted users of the premises will receive written details of the fire procedure as part of the hire arrangements. Hirers of the building are required to adhere to the fire procedures at all times and take such measures as are necessary to ensure the safety of those students/persons for whom they have responsibility.

4. Conclusion

- 4.1 The fire safety management policy reflects the school's serious intent to accept its responsibilities in all matters relating to fire safety. The clear lines of responsibility and organisation describe the arrangements which are in place to implement all aspects of this policy.

Appendix 1- Fire Management Organisational Chart

North Star Academy Trust



Appendix 2 - Evacuation Procedure

Emergency Evacuation Plan North Star Academy Trust	
To be completed by the Lead Fire Warden	

Academy address and contact number	
Plan date	
Review date	

Roles:
Lead Fire Warden:
Fire Wardens:
School Administrator / Receptionist:
Detail back up arrangements in the event of an individual not being on site

Raising the alarm
If the fire is discovered by a staff member or a visitor notifies a staff member of a fire, the alarm will be raised by: activation of the nearest call point or commencing manual warning (whistle, shout etc.)
If fire is detected by automatic detectors, this will trigger the fire alarm

Action to take on hearing the alarm
<p>The following actions will be taken upon the fire alarm being sounded/raised:</p> <ul style="list-style-type: none"> • Lead Fire Warden will take charge and lead in the fire evacuation. • [Who] will Dial 999 and request attendance by the Fire Service. Staff member gives their name, name of building, building address (as detailed above), contact number and details of fire (Note – you may already have a direct link to the Fire Service but details of how/when this would activate should be determined) • [Who] will pick up the visitors signing in book/sheet from reception desk. • Staff will commence evacuation of the building – ensuring this is done in a calm and orderly manner providing assistance to those needing additional help in evacuating. • Separate 'Personal emergency evacuation plans (PEEPs)' are in place for staff and known visitors with additional needs as well as 'General emergency evacuation plans (GEEPs)' for members of public who may visit the building. Class teachers will take responsibility for pupil PEEPS, calling on support from fire wardens when necessary. • Lifts are not to be used for evacuation . • The Lead Fire Warden will undertake a sweep of the building if safe to do so to <ul style="list-style-type: none"> • ensure all individuals remaining in the building are accounted for. • all areas are clear (including back areas). • ensure all doors are closed on the way out. • If safe to do, electrical mains and gas supplies should be switched off before leaving the building. The location of these are detailed below. • [Who] will to ensure nobody re-enters the building until confirmed safe to do so by the

Fire Service

- [Who] will meet at assembly point and check all contractors and staff members are accounted for
- The **Lead Fire Warden** will liaise with the Fire Service upon their arrival

Disabled and temporarily injured persons

Any students or members of staff with a disability will have a Personal Emergency Evacuation Plan which sets out how they will be evacuated in an emergency situation. If our visitors have a disability, we will discuss evacuation with them on arrival.

School pets and PAT-Dog

Teaching assistants are responsible for ensuring the safe evacuation of pets located within classrooms.

PAT-Dog is the responsibility of the owner. The owner MUST ensure the PAT-Dog is put on their lead and evacuated via the nearest exit. The PAT-Dog and their owner will remain at the assembly point.

Escape routes

The escape routes from the building are: (detail designated fire escape routes)

- 1.
- 2.

Fire assembly point

The assembly point is:

Fighting fires – Extinguisher use

Fire extinguishers will only be used where:

- Staff have received training and feel confident in their use
- Where it is deemed safe to do so i.e. there is a clear means of escape, fire is small.

Personal safety always takes priority and, if, in any doubt, staff should not attempt to extinguish a fire

Location of key safety hazards or other fire-related equipment

Fire alarm panel:

Boilers:

Gas supply shut off:

Mains water inlet:

Other:

Variations to plan

Out of hours arrangement:

Upon hearing the fire alarm, evacuate via the nearest exit and make your way to the assembly point. Dial 999 for the fire brigade. Do not make your way back into the building or collect personal belongings.

School events

Should an evacuation be needed during other times (after school clubs, evening events, weekend events etc.) The adults in charge of the activity are responsible for evacuating participants safely, and the fire service is called. The fire brigade MUST be made aware of any missing persons.

Hirers of the building

If the premises are being used by an external body out of hours, it will be the responsibility of the person in charge to maintain all roles in ensuring participants are evacuated safely, and the fire service is called.

Evacuation procedures are made clear to the external body at the time of booking. A copy of the evacuation plan is also provided.

Back up arrangements

In the event the fire alarm system is non-operational in any way, all staff will be made aware and back up arrangement implemented. A handbell is held at the reception and will be used to inform staff of evacuation. The person locating the fire will get a message to the reception so that the handbell can be rung continuously throughout the premises (if safe to do so). All staff will ensure they inform staff/students as they evacuate the buildings.

Alternative arrangements will be made to cover staff absences/ leave etc. to ensure there are always a sufficient number of trained staff available on site.

Responsibilities

Review emergency procedures:	Headteacher
For ensuring adequate staff are on duty to carry out the evacuation plan	Headteacher/Estates Manager/ Director of Finance and Operations
For training staff on the evacuation plan and in their roles and responsibilities	Headteacher/Estates Manager/ Director of Finance and Operations

Appendix 3 - Evacuation Drill Report Template

This form is to be completed after each Emergency Drill with 12 hours of completion of the drill. The form should be completed by coordinating lead of the drill. The form should be reviewed and signed off by a senior member of staff also present at the drill. All forms should then be emailed to the Trusts Estates Manager for review. All actions required need to be completed, however the responsible person may change post review

Date of Report:		Completed by:	
Date of Drill:		Time of drill:	
Time taken to evacuate:			
Time taken to complete roll call:			
	Y/N N/A	Observations:	
Fire wardens reported to the assembly point and performed tasks?			
Staff & students responded to fire alarm and reported to assembly point?			
All windows and doors closed during evacuation?			
Occupants exited via nearest exit?			
Visitors / contractors / students were properly directed?			
Persons with disabilities were accounted for?			
Personal emergency evacuation plans (PEEPs) followed?			
Roll call carried out and missing persons accounted?			
Exits guarded to prevent re-entry?			
Occupants did not attempt to re-enter the building?			
Emergency grab bags collected (if safe to do so)?			
Student/staff and visitor registers collected?			
School pets, guide/therapy dogs evacuated?			
Communicated equipment used effectively, e.g. radios?			
Effectiveness of drill Satisfactory / Unsatisfactory			
Additional observations (Include notes that will help response, performance and management of future evacuation drills):			

Appendix 4 - Fire Risk Assessment:

This will be added to each document as it is sent to each individual school



Appendix 5 - Personal Emergency Evacuation Plan (PEEP)

This form is to be completed by the Class Teacher on behalf of students. A PEEP is a **Personal Emergency Evacuation Plan**. It is a bespoke 'escape plan' for individuals who may not be able to reach an ultimate place of safety unaided or within a satisfactory period of time in the event of any emergency.

Personal Emergency Evacuation Plan	
Student / Staff Member Name:	
Class:	
Building and Floor:	
Phone Ext:	
Personalised Evacuation Procedure (A step by step account beginning with the alarm).	
1	On activation of the alarm
2	
3	
4	
Methods Of Assistance (Detail methods of guidance, transfer procedures etc. For example, use of Evac Chair)	
The following have been designated to give assistance and are aware of the contents of the PEEP	
Name	
Contact details (building, Class and Ext)	
Name	
Contact details (building, Class and Ext)	
Equipment Required (including means of communication, use of evac-chairs etc)	
Additional Information (any information that will assist in evacuating the individual)	
Monitor and Review	
PEEP should be rehearsed to test their efficiency. Rehearsals could take place during Pre-planned fire drills.	
Signed by Teacher:	Date:

Further Guidance

Further guidance can be obtained from organisations such as the Health and Safety Executive (HSE) or Judicium Education. The following are some examples. The H&S lead in the school will keep under review to ensure links are current.

- HSE
<https://www.hse.gov.uk/>
- Education and Skills Funding Agency – Fire Safety in new and existing school buildings
<https://www.gov.uk/government/publications/fire-safety-in-new-and-existing-school-buildings/fire-safety-in-new-and-existing-school-buildings>
- National Education Union (NEU) – Fire Safety
[Health and safety at work | National Education Union \(neu.org.uk\)](https://www.neu.org.uk/health-and-safety-at-work)
- National Fire Chiefs Council (NFCC)
<https://www.nationalfirechiefs.org.uk/>
- Local Fire and Rescue Service
<https://www.nationalfirechiefs.org.uk/Fire-and-Rescue-Services>

Further Resources

- HM Government Fire Safety Risk Assessment – Educational Premises
https://assets.publishing.service.gov.uk/government/uploads/system/uploads/attachment_data/file/14887/fsra-educational-premises.pdf